

# Setting up a two computer network to move files between computers

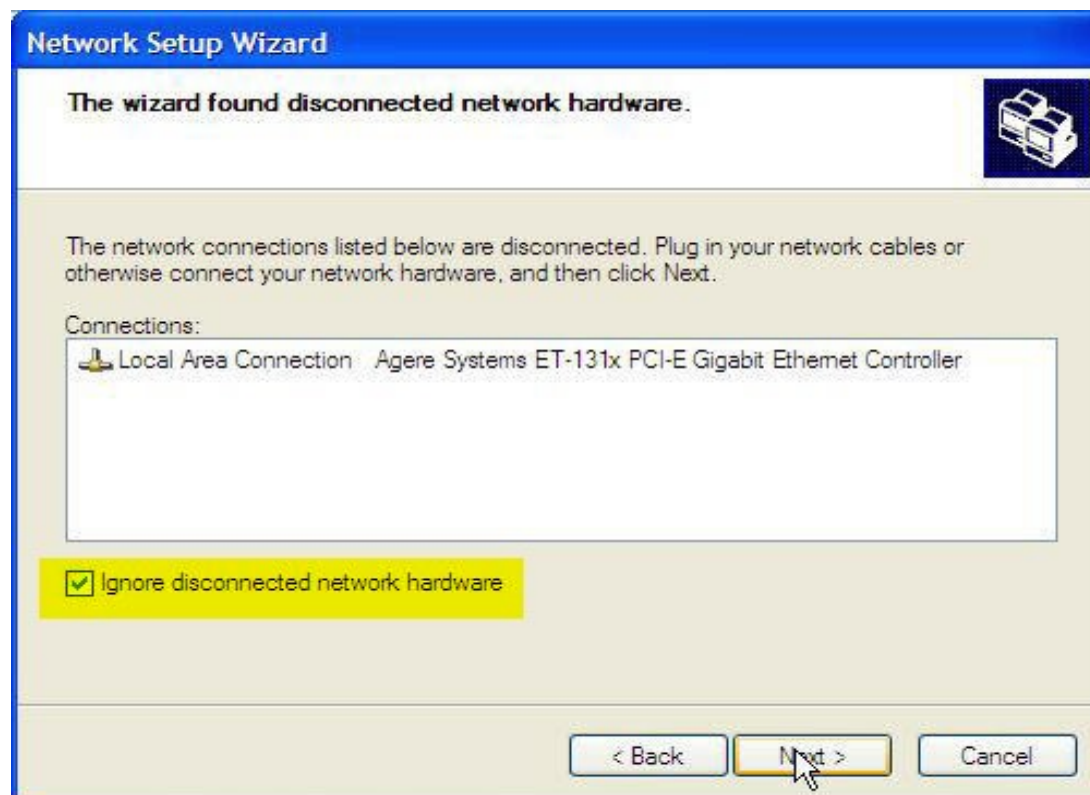
From the Start Menu goto Control Panel

On the Control Panel you will find an entry  
- Network Setup Wizard – open this

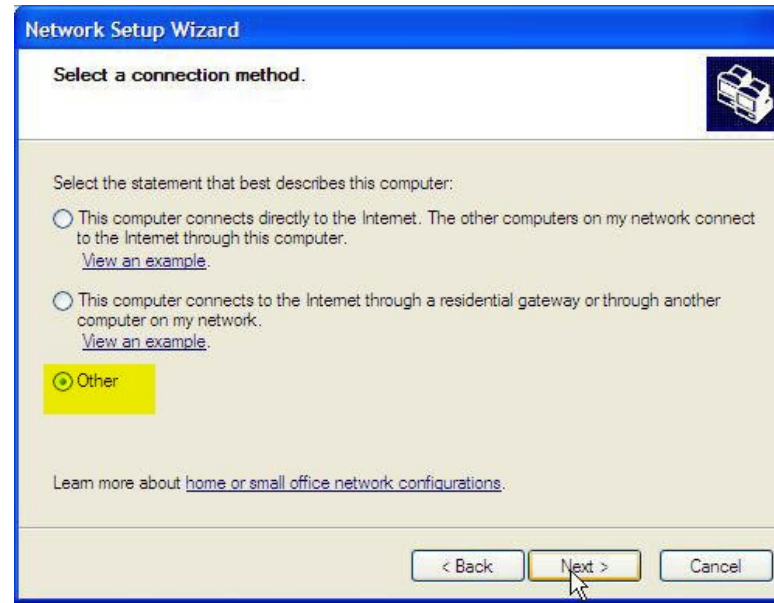


The First few screens only advise you to have your two computers connect by a Cat5 networking cable. This may be either a crossover cable or a standard 'patch' cable. Crossover cables are needed by older computers. Newer machines will sense their connections and adapt to the less costly standard patch cords

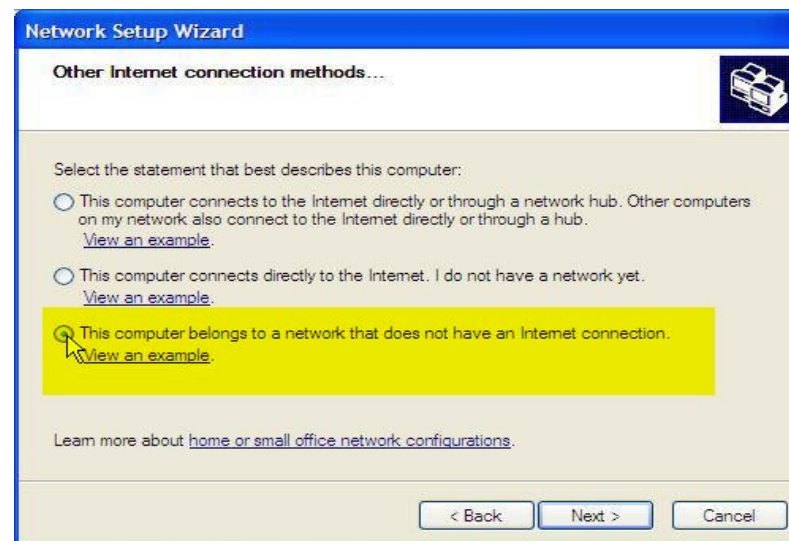
Should you see this screen tick Ignore before proceeding

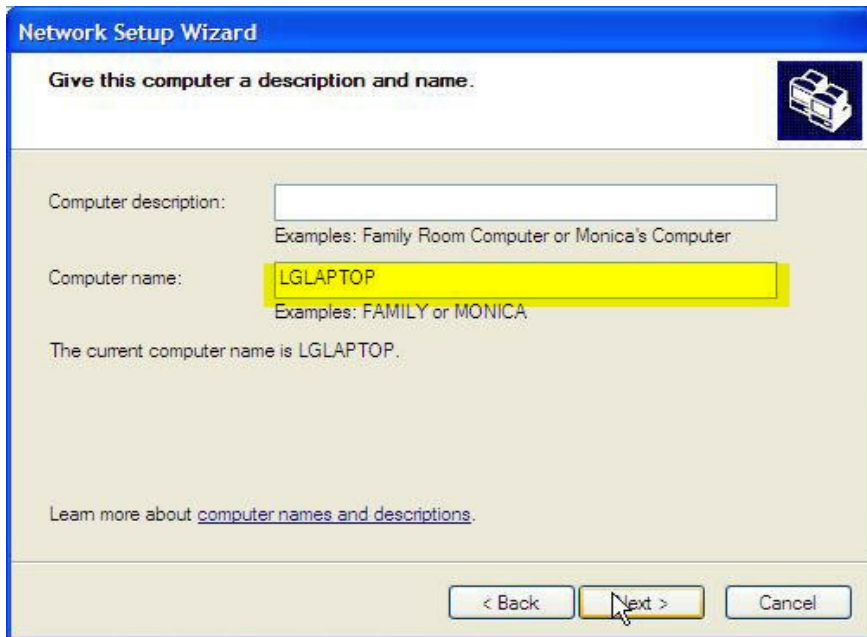


You will want to set up a local network NOT connected to the internet – click “other” on this screen



You want the last alternative on the next screen

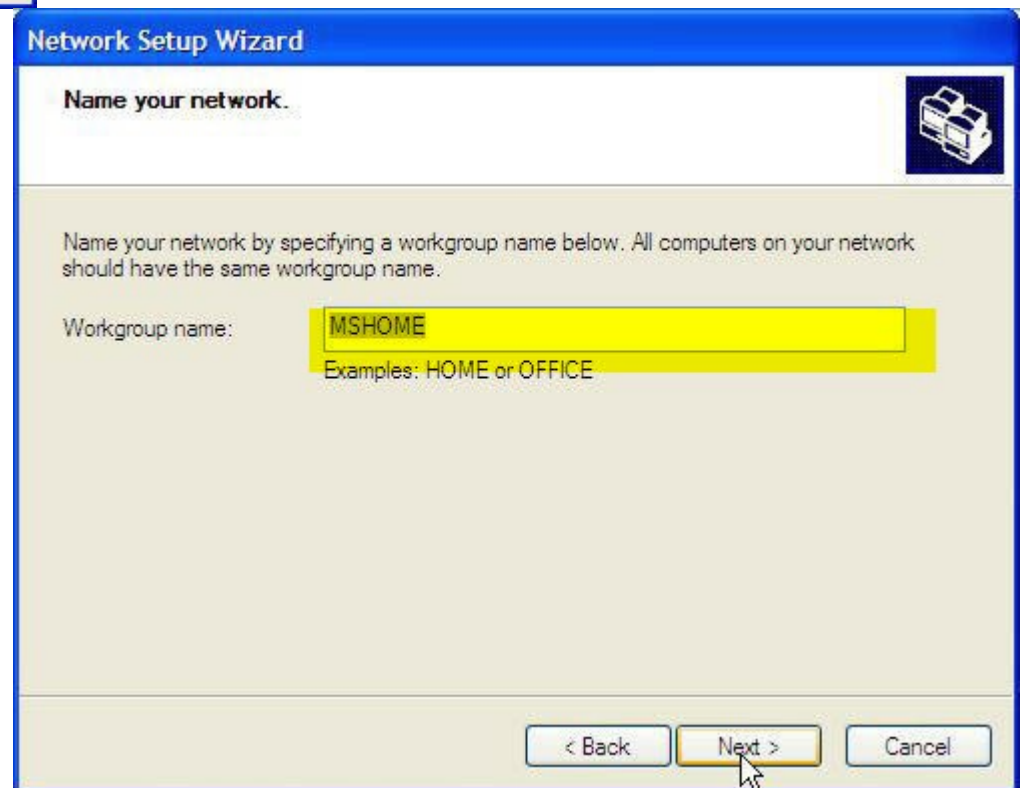


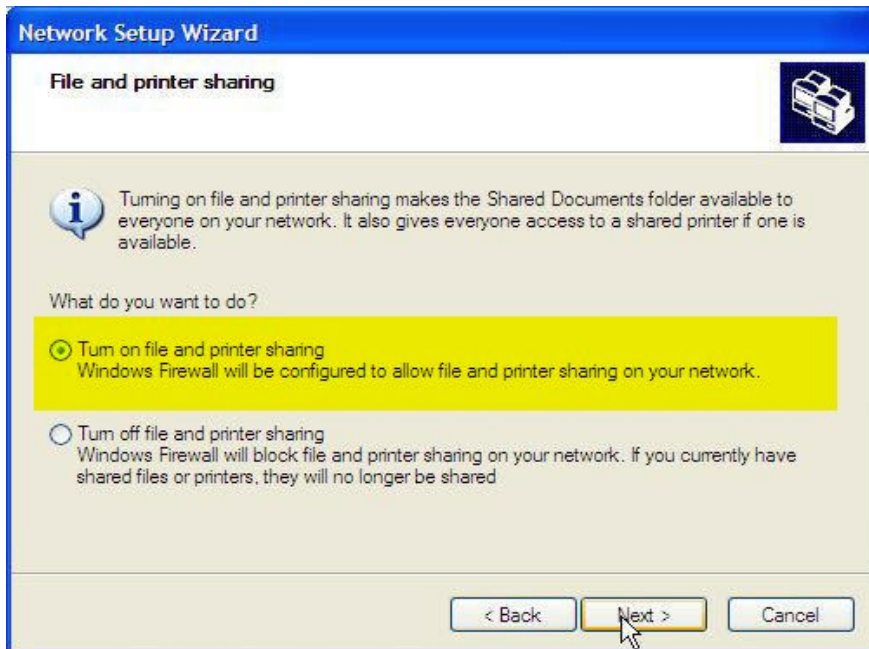


Your computer does not need a 'Description' but it must have a name – here it is LGLAPTOP - place your machine name here

The next screen asks for a Workgroup name – all (both) computers on the Network must have the same Workgroup Name

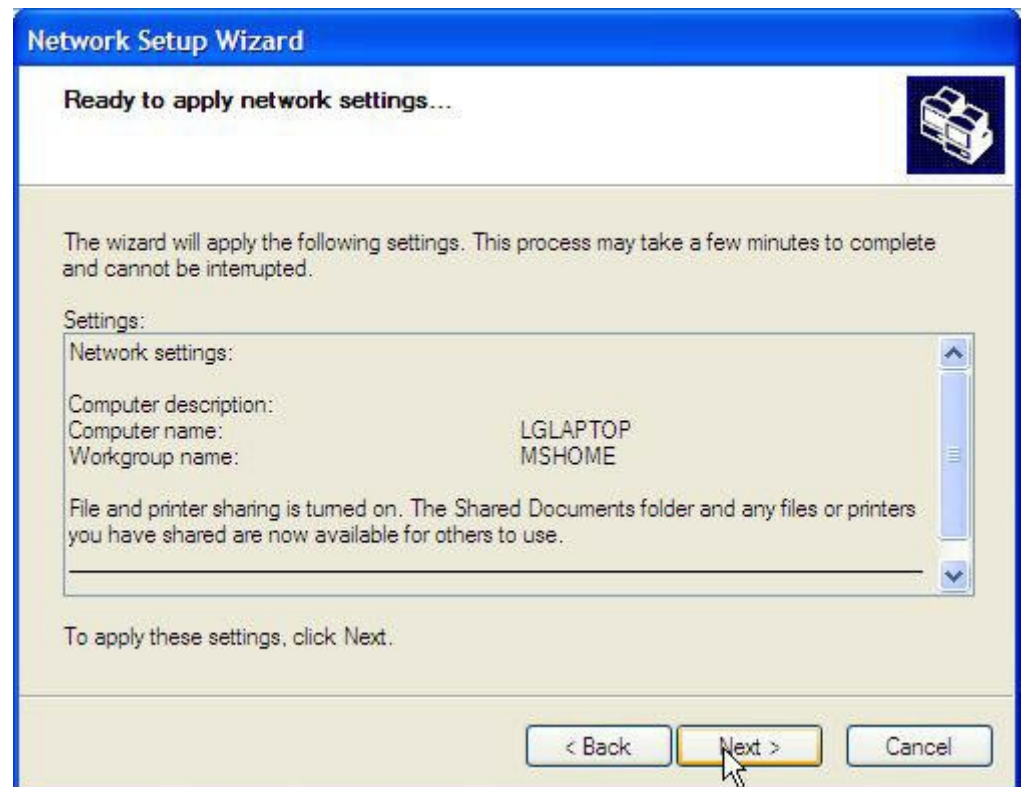
This is set in the Computer Name panel of Systems Properties (Control Panel > Systems)

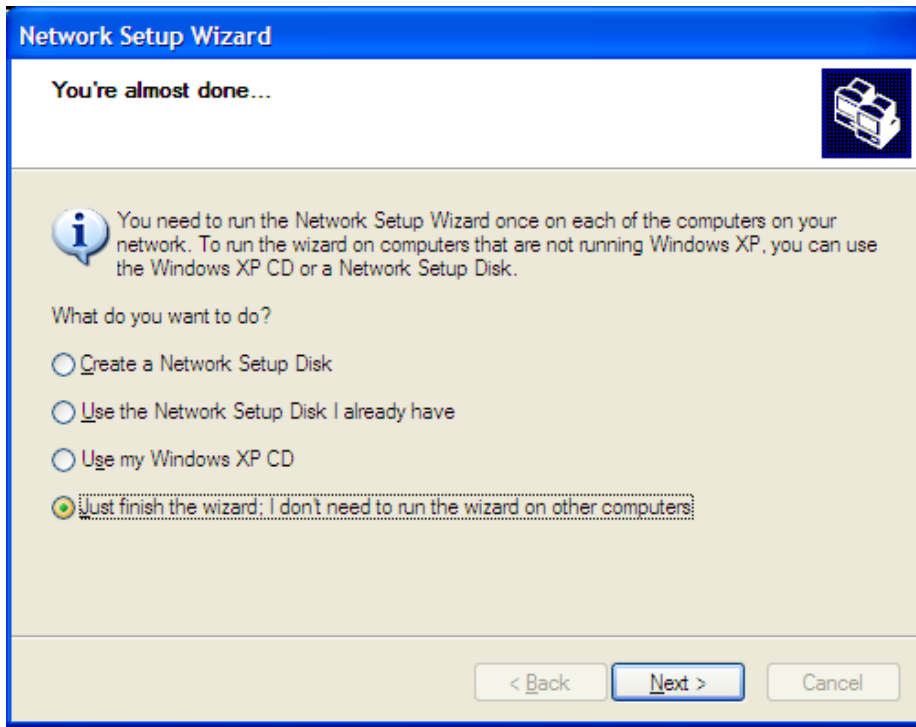




Turn on File and Printer Sharing by clicking this button and go to Next

Up pops the 'Ready to Go' Panel – your nearly finished





Your selection - I choose 'Just Finish' – I can run from my other machine or boot from my Windows XP CD

The Wizard will now assign IP addresses to your networked computers.

Before you can use the network you will need to restart your computers





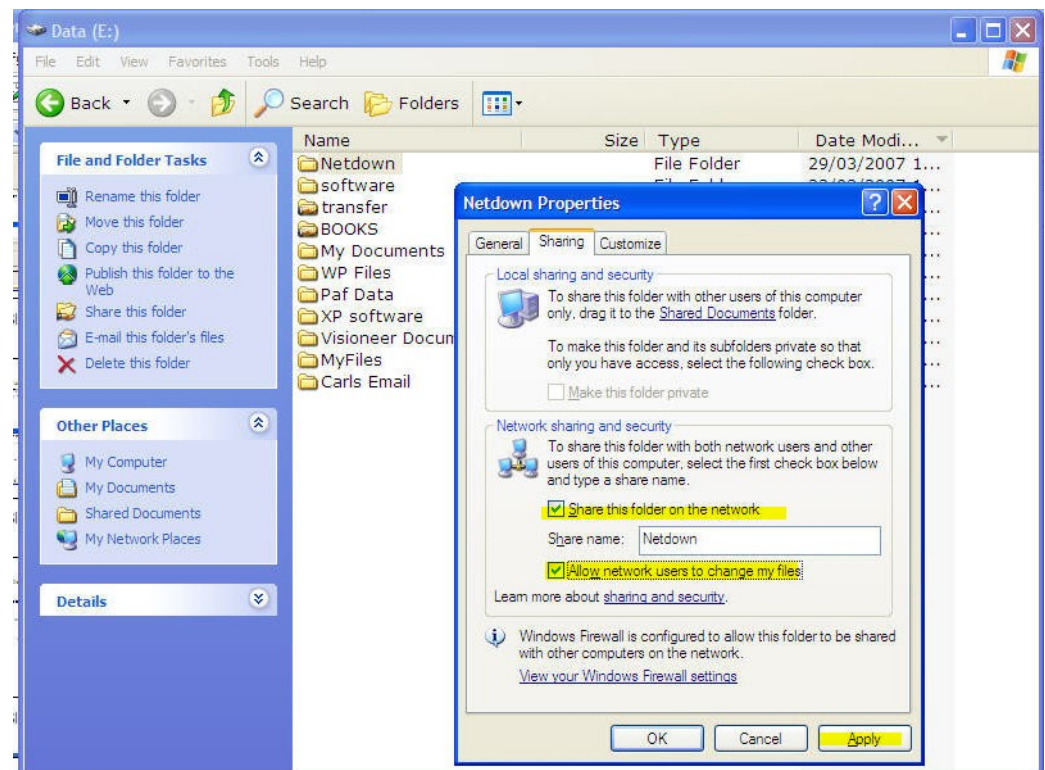
You must enable Sharing – Right Click on a folder – select Properties - Sharing and Security

Turn on Network Sharing

To add, delete or modify these files you need to set Allow Change Apply

Your Shared files are now found in “My Network Places” - wherever that shows – You can find in on the Start Menu

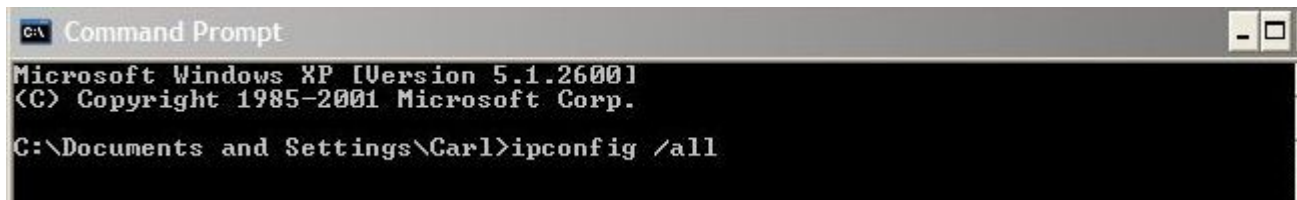
A Networked file can be copied and moved if “allow” was set



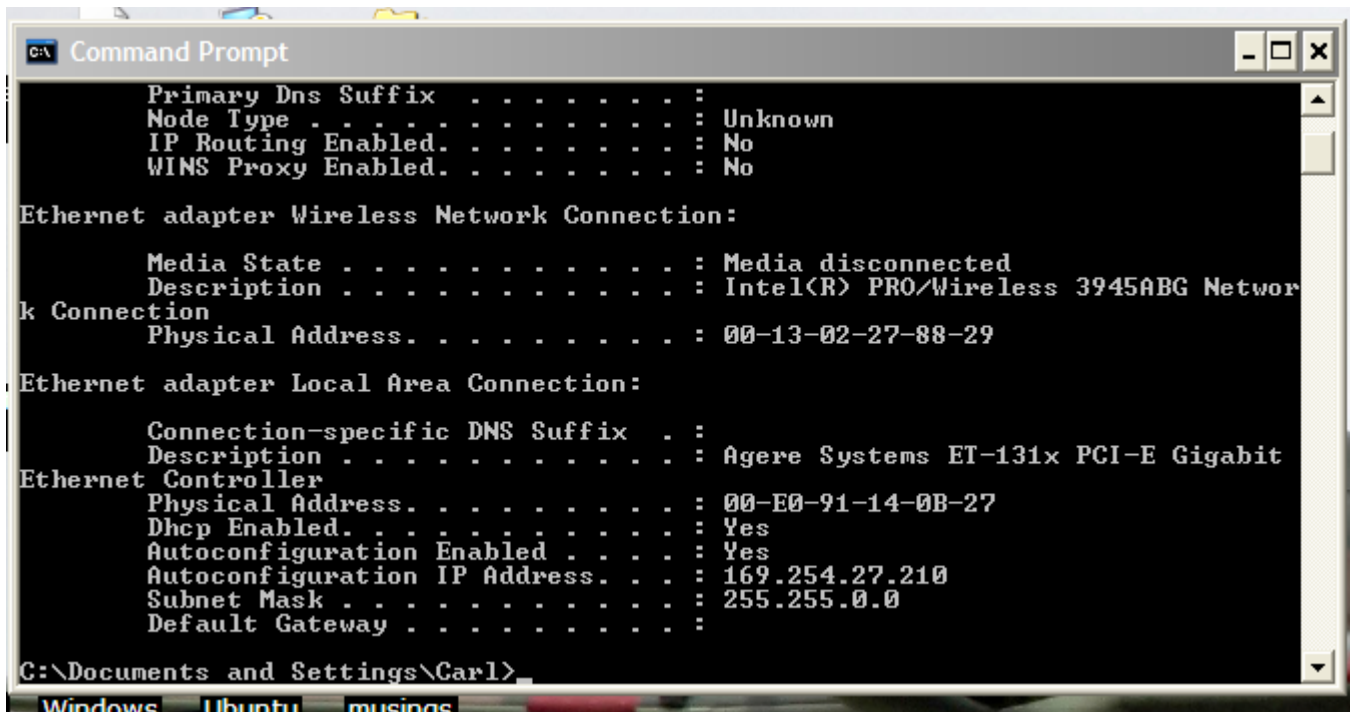
# Trouble Shooting

If you have ZONE ALARM or some such firewall active – you must allow the IP Address of the Machines to talk to each other -or shut it down.

IP Address is found by Start>Programs>Accessories>Cmd  
On the CMD (Command) screen that pops up run 'ipconfig /all'



```
C:\ Command Prompt
Microsoft Windows XP [Version 5.1.2600]
(C) Copyright 1985-2001 Microsoft Corp.
C:\Documents and Settings\Carl>ipconfig /all
```



```
C:\ Command Prompt
Primary Dns Suffix . . . . . :
Node Type . . . . . : Unknown
IP Routing Enabled. . . . . : No
WINS Proxy Enabled. . . . . : No

Ethernet adapter Wireless Network Connection:

Media State . . . . . : Media disconnected
Description . . . . . : Intel(R) PRO/Wireless 3945ABG Network
Connection
Physical Address. . . . . : 00-13-02-27-88-29

Ethernet adapter Local Area Connection:

Connection-specific DNS Suffix . :
Description . . . . . : Agere Systems ET-131x PCI-E Gigabit
Ethernet Controller
Physical Address. . . . . : 00-E0-91-14-0B-27
Dhcp Enabled. . . . . : Yes
Autoconfiguration Enabled . . . . : Yes
Autoconfiguration IP Address. . . : 169.254.27.210
Subnet Mask . . . . . : 255.255.0.0
Default Gateway . . . . . :

C:\Documents and Settings\Carl>
```